

EASY TO REMANUFACTURE CARTRIDGES THAT YOU SHOULD BE REMANUFACTURING - PART 3



DELL 1250/1350/1355



DELL 2130/2135



DELL 5130 SERIES



EPSON LPS 5000



KYOCERA FS 1000



KYOCERA FS 1100



KYOCERA FS 1370



KYOCERA FS 2020



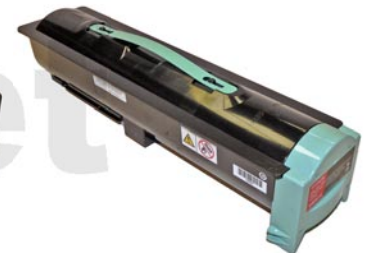
KYOCERA FS 3900



KYOCERA FS 4020



KYOCERA FS 9500



LEXMARK X850



OKIDATA B420



RICOH AFICIO CL-7000



RICOH AFICIO C-4500



SHARP AM-300/400/900

EASY TO REMANUFACTURE CARTRIDGES THAT YOU SHOULD BE REMANUFACTURING - PART 3

By Mike Josiah and the Technical Staff at UniNet

This is a continuation in a series on easy to do color and monochrome cartridges you may be passing up, but shouldn't be. They represent some of the best profit opportunities currently in our industry. These cartridges are all very simple, and with a good majority of them there is nothing to test! Training is minimal and in all cases the time needed to do them is very small. For the purposes of these articles, we will not be going in depth but to be honest there really is no need. Some use chips while others do not. Some have waste chambers and others are purely a supply hopper. All of this will be covered.

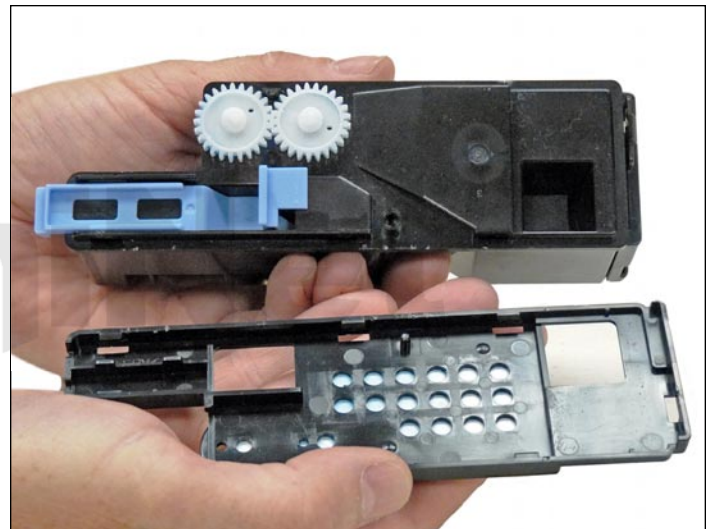


DELL 1250/1350/1355 TONER CARTRIDGE

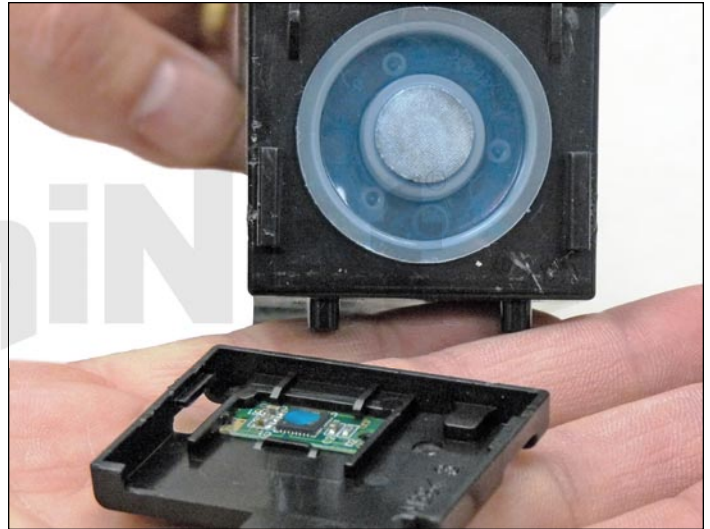
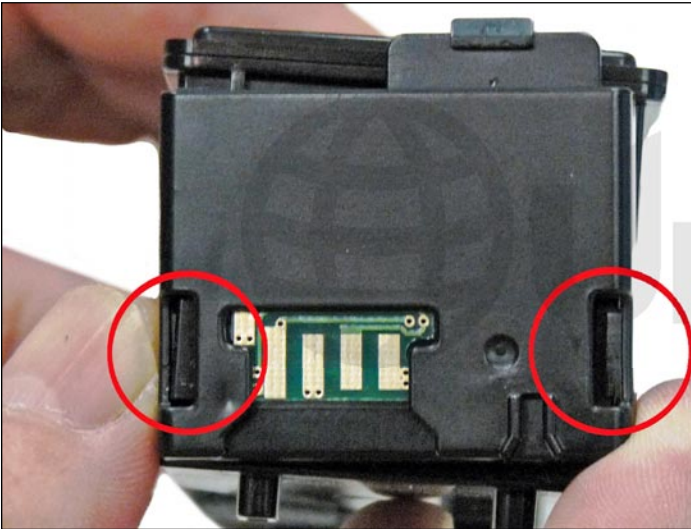
The Dell 1250 cartridges are rated for 2000 pages black and 1400 pages color. The OEM numbers are 331-0778 Black, 331-0777 Cyan, 331-0780 Magenta, and 331-0779 Yellow. There is a chip that must be replaced every cycle. **NOTE:** The black cartridge is physically larger than the colors.



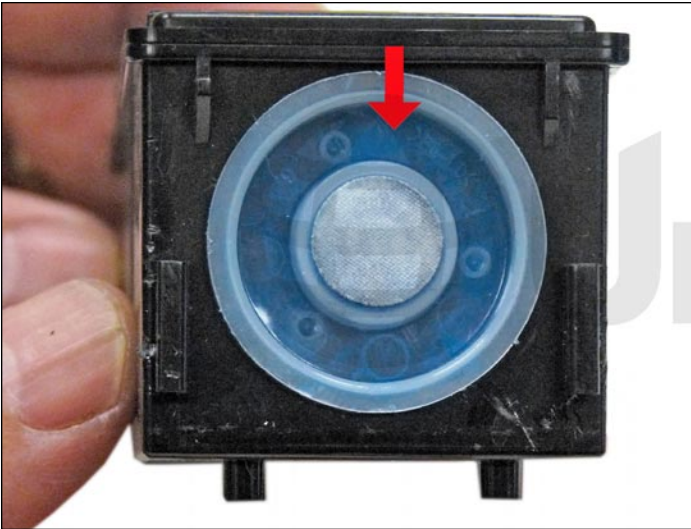
1. Remove the top cover by taking a flat head screwdriver and prying up the five tabs.



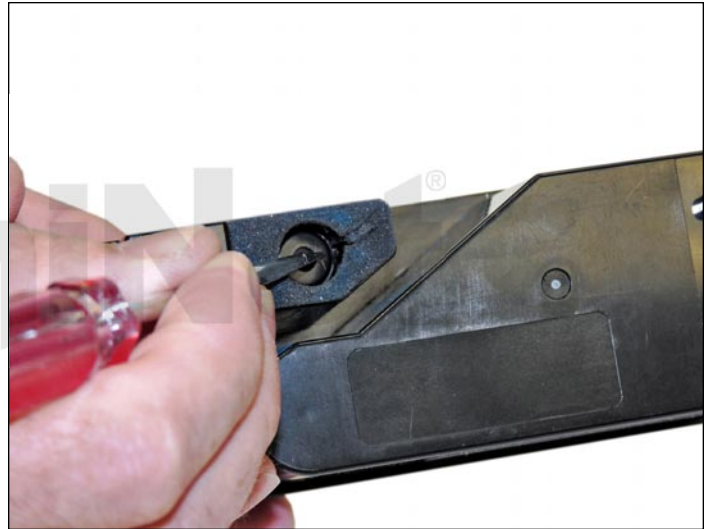
2. Remove the top cover.



3. Pry up the two tabs on the end cap and remove.



4. Remove the fill plug and clean out all remaining toner.

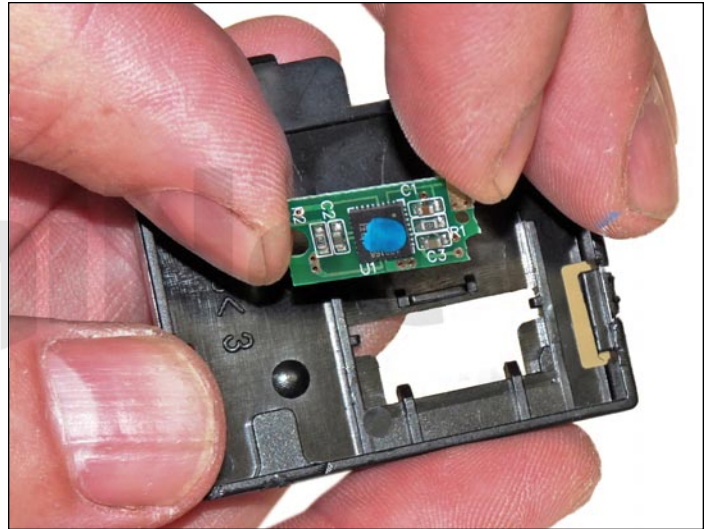
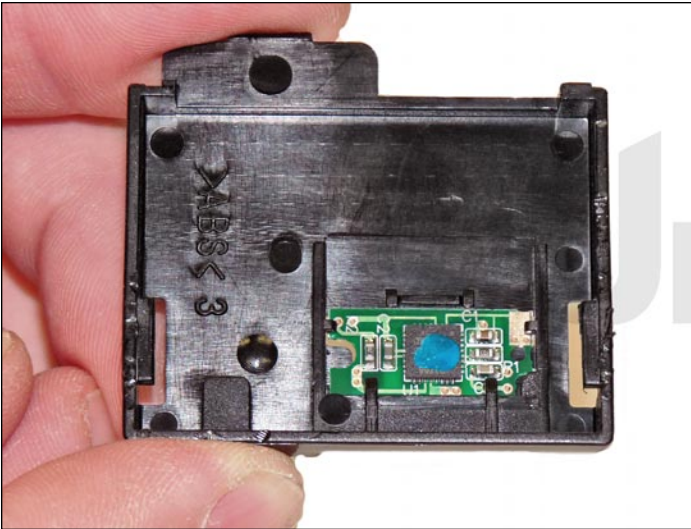


5. Press in on the waste toner port and vacuum all the waste toner out from the cartridge.

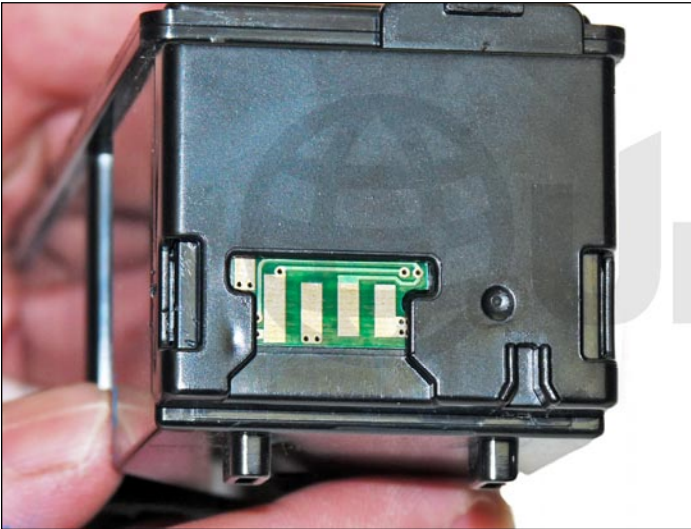


6. Fill the hopper with the appropriate color toner.

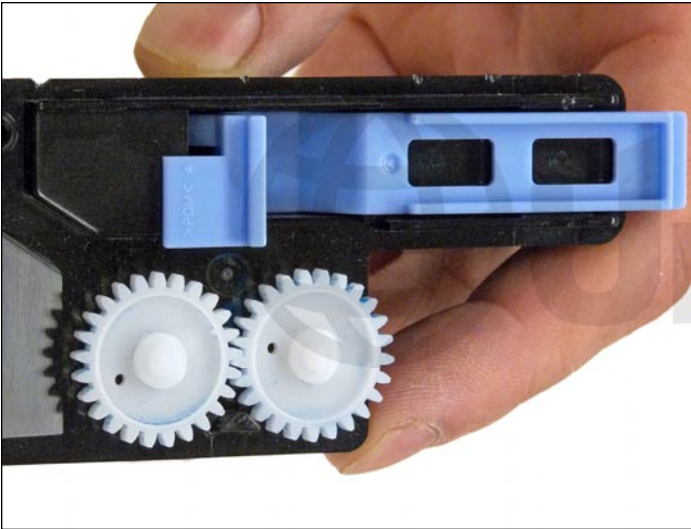
Replace the fill plug.



7. Replace the chip in the end cap by lifting it slightly and sliding it out.



8. Install the end cap by snapping it in place.



9. Install the top cover.

Make sure the two gears and the blue handle are in place.



DELL 2130/2135 TONER CARTRIDGE

NOTE: The 2130 and 2135 printers use similar cartridges but use different part numbers. The Dell 2130CN cartridges are rated for 1,000 or 2,500 pages, depending on the fill. The OEM numbers are 330-1416 low yield Black, 330-1436 high yield Black; 330-1417 low yield Cyan, 330-1437 high yield Cyan; 330-1419 low yield Magenta, 330-1433 high yield Magenta; and 330-1418 low yield Yellow, 330-1438 high yield Yellow.

The Dell 2135CN cartridges are also rated for 1,000 or 2,500 pages, depending on the fill. The OEM numbers are 330-1385 low yield Black, 330-1389 high yield Black; 330-1386 low yield Cyan, 330-1390 high yield Cyan; 330-1388 low yield Magenta, 330-1392 high yield Magenta; and 330-1387 low yield Yellow, 330-1391 high yield Yellow. Both have chips that must be replaced each cycle.



1. Remove the black tape from the seam of the supply hopper and the waste chamber. Save the tape for use when re-assembling the cartridge.



2. Press in on the two tabs of one side as shown to release the waste chamber. It is sometimes helpful to press back on the waste chamber as the tabs are pressed in.



3. Remove the supply hopper cover.

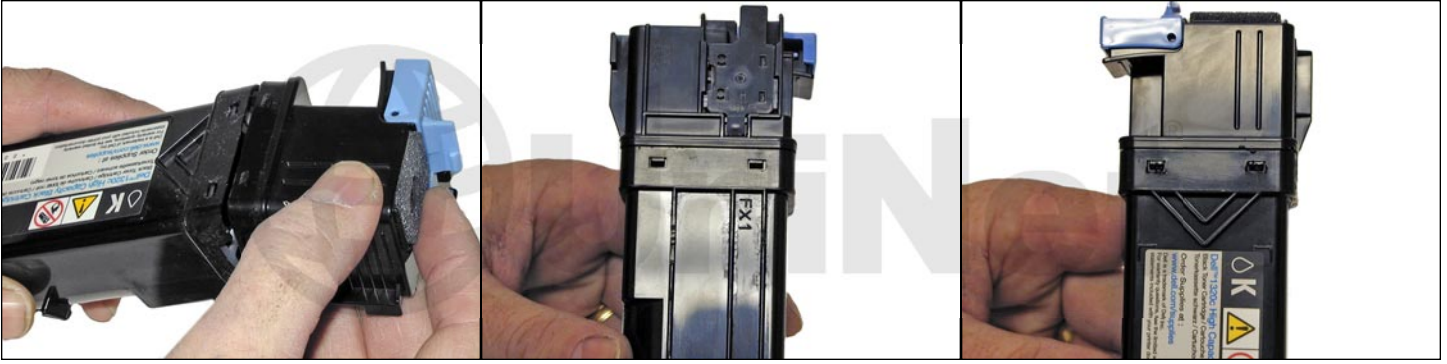
Clean out any remaining toner from both chambers.



4. Fill the hopper with toner for use in the Dell 2130/2135. Remember, while the cartridges all look the same, they are not interchangeable. Each color has a different set of plastic tabs.



5. Clean the plastic lip where the hopper cover sits of any toner, replace the cover.

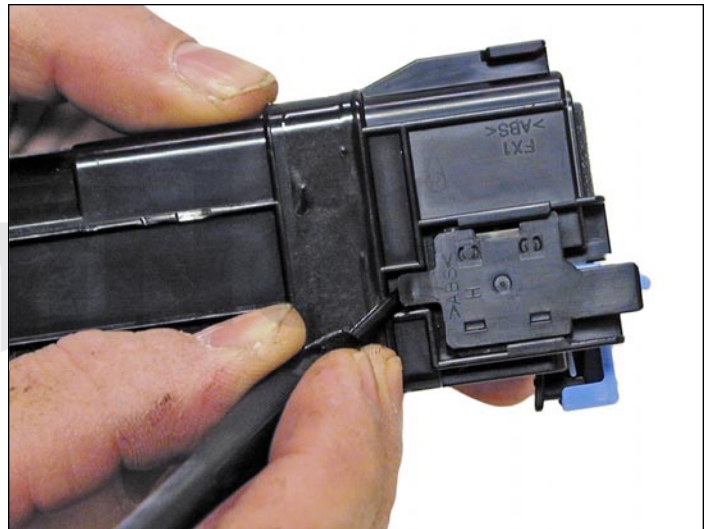


6. Install the waste chamber on to the supply hopper.

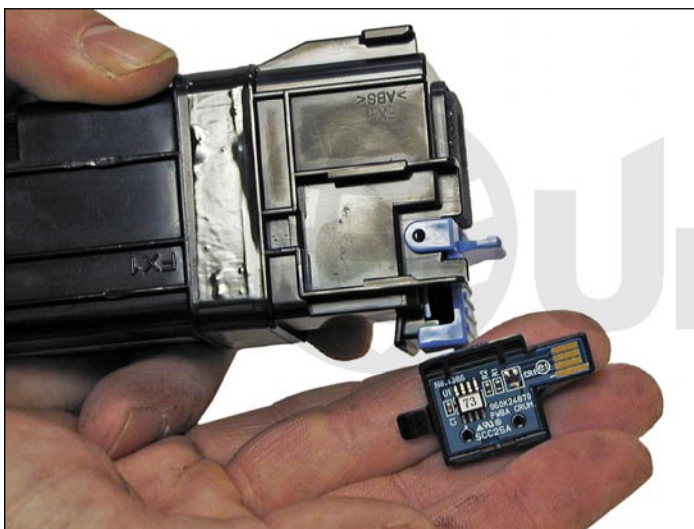
Make sure all four tabs are locked in place.



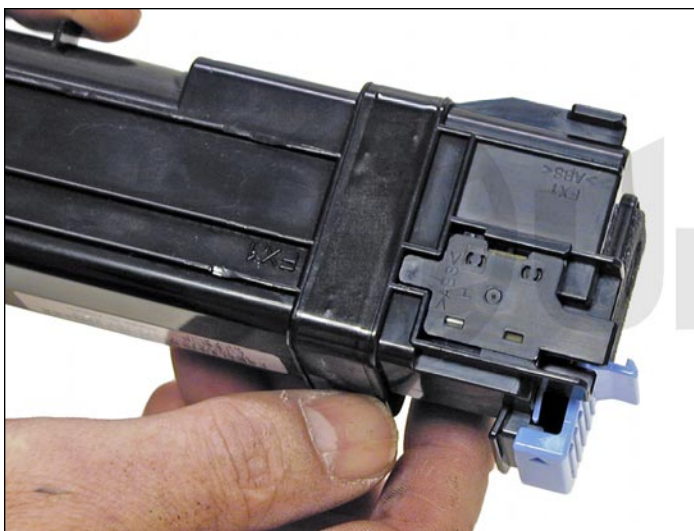
7. Re-install the black tape seal across the seam. If the OEM tape is not useable, good black rubber electrical tape (NOT the vinyl type) will work fine (toner will stick to anything made from vinyl).



8. Carefully pry off the plastic chip holder tab.



9. Slide the holder out of the cartridge and replace the chip.

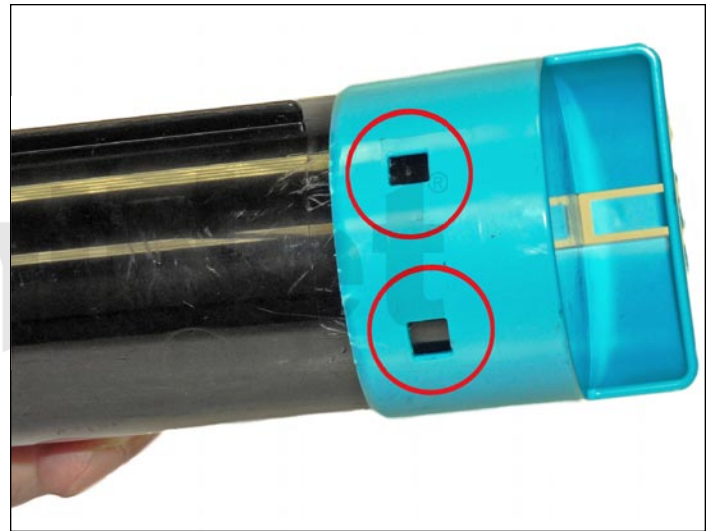
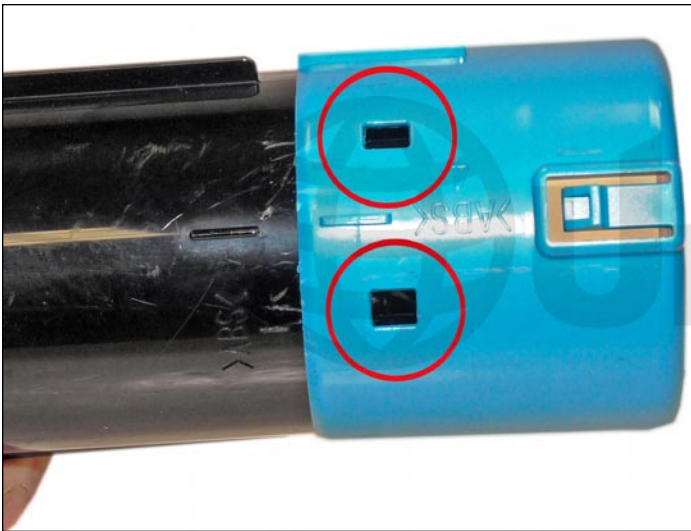


10. Slide the holder back in place until the tab locks in place.



DELL 5130 SERIES TONER CARTRIDGE

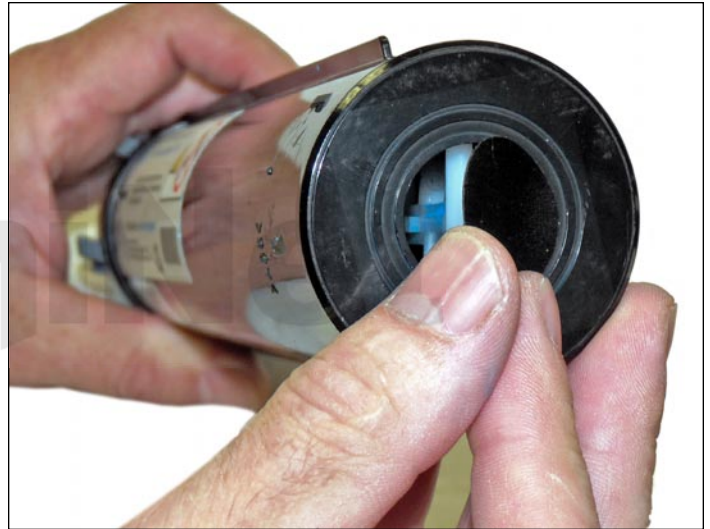
The Dell 5130 Series cartridges are rated for 18,000 pages black and 12,000 pages color. The OEM numbers are 310-8092 Black, 310-8094 Cyan, 310-8096 Magenta, and 310-8098 Yellow. There is a chip that must be replaced every cycle.



1. Pry up on the colored end cap by lifting up all four tabs.



2. Remove the colored end cap.



3. Remove the fill hole seal and place aside.



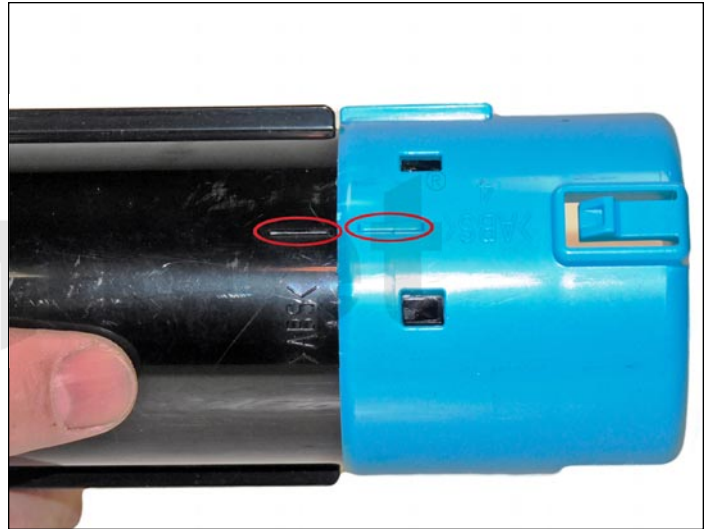
4. Open the toner port and clean out any remaining toner.

Close the toner port.



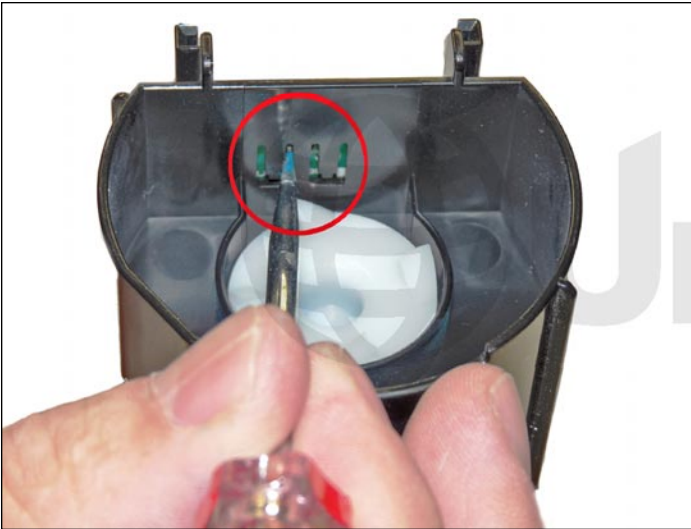


5. Fill the cartridge with toner for use in the Dell 5130. Replace the fill hole seal (as shown). If the seal is damaged or is leaking the seal for the Samsung CLP-300 can be used.



6. Align the two marks on the end cap and tube.

Install the end cap on the cartridge.



7. Using a small Jeweler's type screwdriver, pry up the chip through the small slots underneath and slide it out.

Replace the chip.



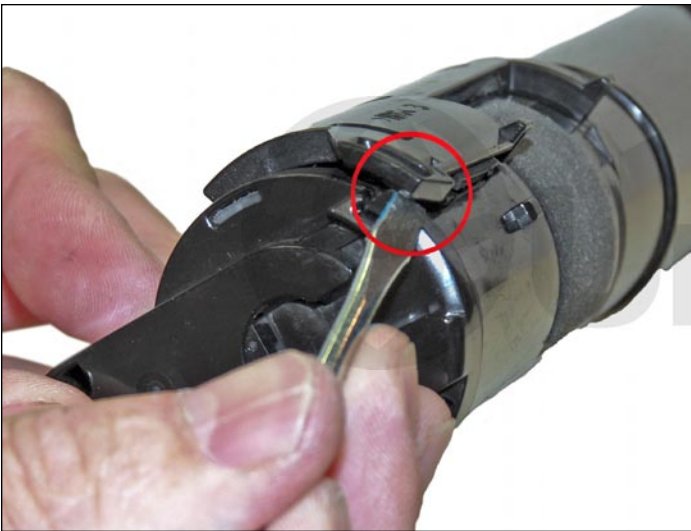


EPSON LPS-5000 TONER CARTRIDGE

The Epson LPS-5000 cartridges are rated for 6,500 pages black and color.

The OEM numbers are LPCA3T12K Black, LPCA3T12C Cyan, LPCA3T12M Magenta, and LPCA3T12Y Yellow.

There is a chip that must be replaced every cycle.



1. Carefully pry up the locking tab on the toner port.

Slide the cover off the lock.



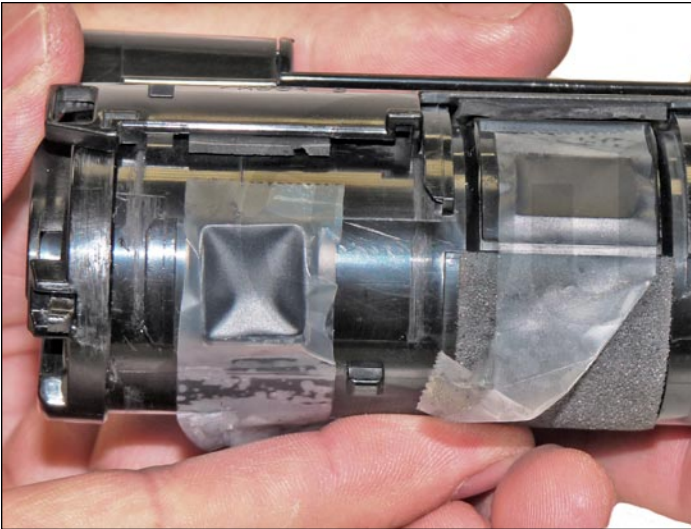
2. Slide the entire cover back to open up the ports.



3. Vacuum the tube clean through the second port and fill with toner for use in the Epson LPS-5000. Leave the fill plug and the first port alone as it contains developer.



4. Fill the second port with toner for use in the Epson LPS-5000.



5. Seal both ports with a new seal, or use a clear tape.



6. Pry up the chip cover, and then the chip from the end cap and replace.



7. Slide the port cover back in place.



KYOCERA FS-1000 TONER CARTRIDGE

The Kyocera FS-1000 cartridges are rated for 6,000 pages. The OEM number is TK-17.

There is NOT a chip used on this cartridge.

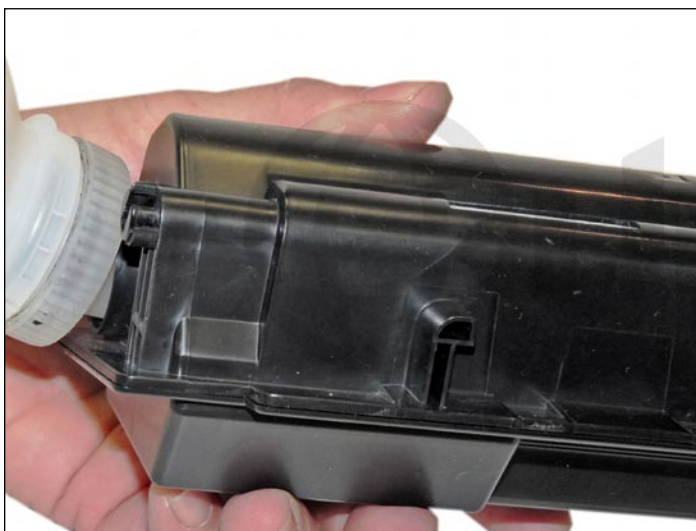


1. Remove the fill plug using a small jeweler's screwdriver.

Clean out all the remaining toner.



2. Make sure the toner port is closed, by turning the end screw using a slotted screwdriver.



3. Fill the cartridge with toner for use in the TK-17 series of cartridges. Replace the fill plug.



4. If shipping the cartridge, place a small strip of tape across the toner port.



KYOCERA FS-1100 TONER CARTRIDGE

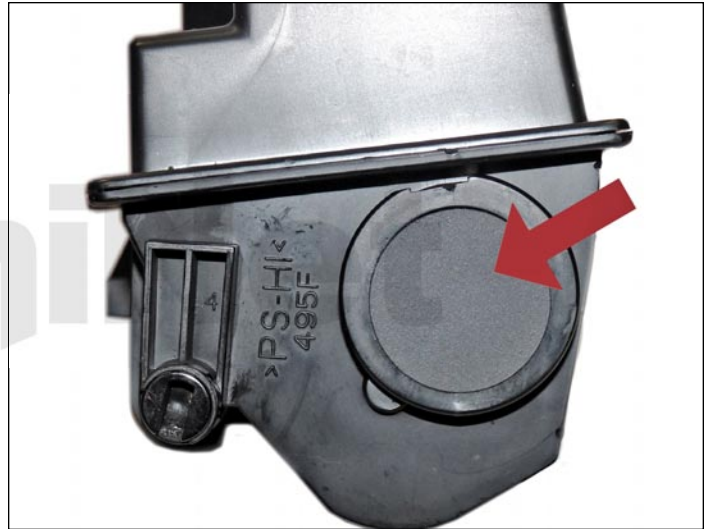
The Kyocera FS-1100 cartridges are rated for 4,000 pages. The OEM number is TK-142.

There is a chip used on this cartridge that must be replaced each cycle.

The chips are regional, so make sure you have the correct one!



1. Drill a 1/2" to 3/4" hole into the fill plug. The OEM plugs are welded in so the hole is necessary. Clean out all the remaining toner.



2. Make sure the toner port is closed.

Fill the cartridge with toner for use in the TK-142 series of cartridges.

Use a Samsung CLP-300 seal to cover the hole you drilled.



3. If shipping the cartridge, place a small strip of tape across the toner port.



4. Peel off the old chip label (it is an RF type chip).

Install the new chip label.



KYOCERA FS-1370 TONER CARTRIDGE

The Kyocera FS-1370 cartridges are rated for 7,500 pages. The OEM number is 170, 172, 173, 174 (depending on your region). There is a chip used on this cartridge that must be replaced each cycle. The chips are regional so make sure you have the correct one!



1. Drill a 1/2" to 3/4" hole into the fill plug. The OEM plugs are welded in so the hole is necessary. Clean out all the remaining toner.



2. Make sure the toner port is closed.



3. Fill the cartridge with toner for use in the TK-170 series of cartridges. Use a Samsung CLP-300 seal to cover the hole you drilled.



4. If shipping the cartridge, place a small strip of tape across the toner port.



5. Peel off the old chip label (it is an RF type chip).

Install the new chip label.



KYOCERA FS-2020 TONER CARTRIDGE

The Kyocera FS-2020 cartridges are rated for 12,000 pages. The OEM number is TK-342.

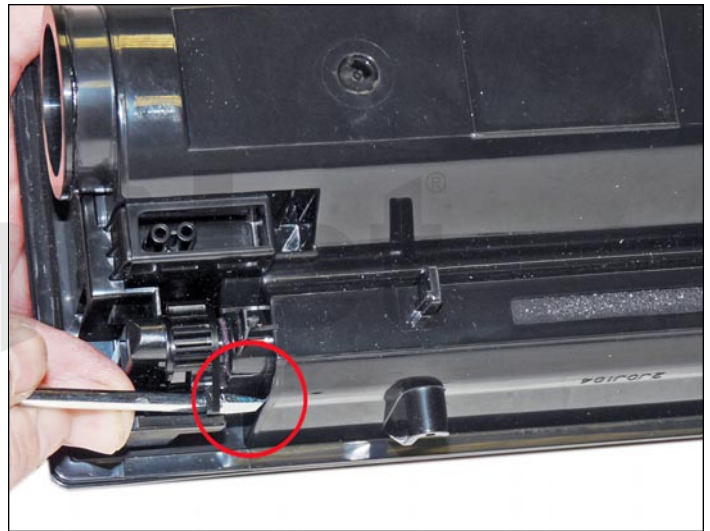
There is a chip used on this cartridge that must be replaced each cycle.



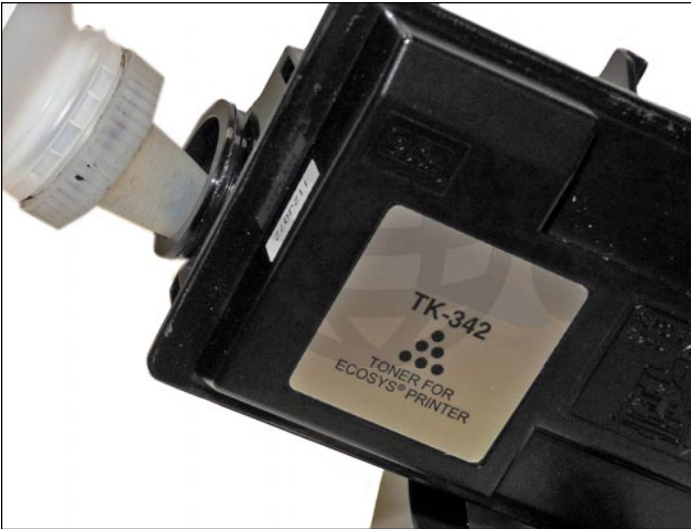
1. Drill a 1/2" to 3/4" hole into the fill plug.

The OEM plugs are welded in so the hole is necessary.

Clean out all the remaining toner.



2. Make sure the toner port is closed. If open, close the port by turning a tab on the gear with a screwdriver.



3. Fill the cartridge with toner for use in the TK-342 series of cartridges. Use a Samsung CLP-300 seal to cover the hole you drilled.



4. If shipping the cartridge, place a small strip of tape across the toner port.



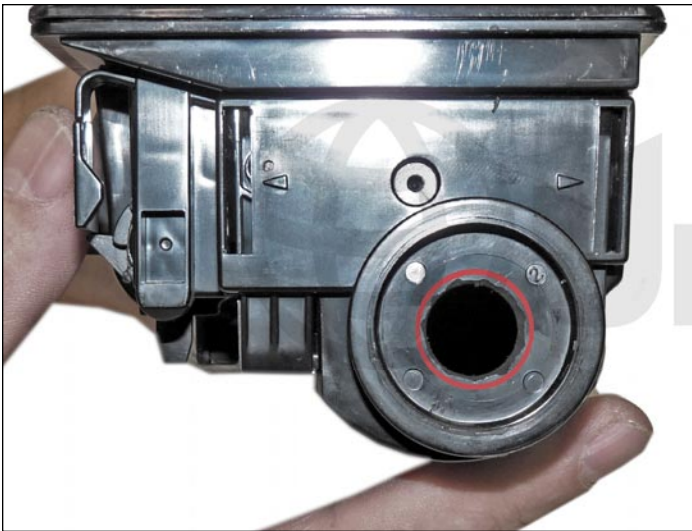
5. Peel off the old chip label (it is an RF type chip).

Install the new chip label.



KYOCERA FS-3900 TONER CARTRIDGE

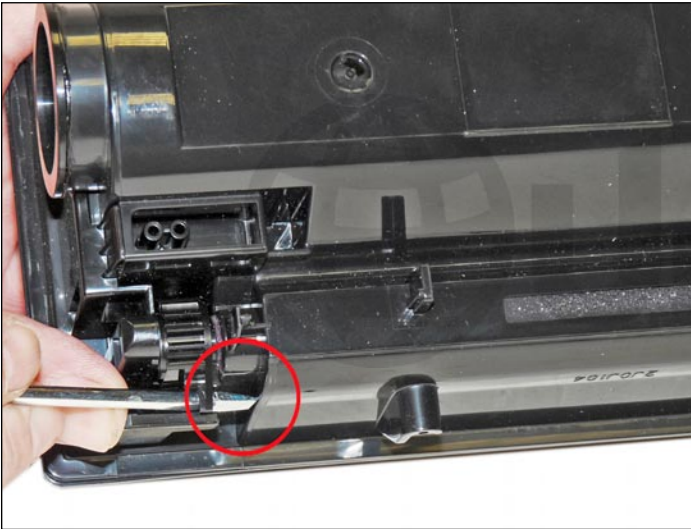
The Kyocera FS-3900 cartridges are rated for 15,000 pages. The OEM number is TK-320, 322 (depending on your region). There is a chip used on this cartridge that must be replaced each cycle. The chips are regional so make sure you have the correct one!



1. Drill a 1/2" to 3/4" hole into the fill plug. The OEM plugs are welded in so the hole is necessary. Clean out all the remaining toner.



2. Make sure the toner port is closed.



3. If open, close the port by turning a tab on the gear with a screwdriver.



4. Fill the cartridge with toner for use in the TK-320 series of cartridges. Use a Samsung CLP-300 seal to cover the hole you drilled.



5. If shipping the cartridge, place a small strip of tape across the toner port.



6. Peel off the old chip label (it is an RF type chip).

Install the new chip label.



KYOCERA FS-4020 TONER CARTRIDGE

The Kyocera FS-4020 cartridges are rated for 20,000 pages. The OEM number is TK-360, 362, 364 (depending on your region). There is a chip used on this cartridge that must be replaced each cycle. The chips are regional so make sure you have the correct one!



1. Drill a 1/2" to 3/4" hole into the fill plug.

The OEM plugs are welded in so the hole is necessary.

Clean out all the remaining toner.



2. Make sure the toner port is closed. If open, close the port by turning a tab on the gear with a screwdriver.



3. Fill the cartridge with toner for use in the TK-360 series of cartridges. Use a Samsung CLP-300 seal to cover the hole you drilled.



4. If shipping the cartridge, place a small strip of tape across the toner port.



5. Peel off the old chip label (it is an RF type chip).

Install the new chip label.



KYOCERA FS-9500 TONER CARTRIDGE

The Kyocera FS-9500 cartridges are rated for 20,000 pages. The OEM number is TK-60.

There is a NOT a chip used on this cartridge.



1. Remove the fill plug from the cartridge.

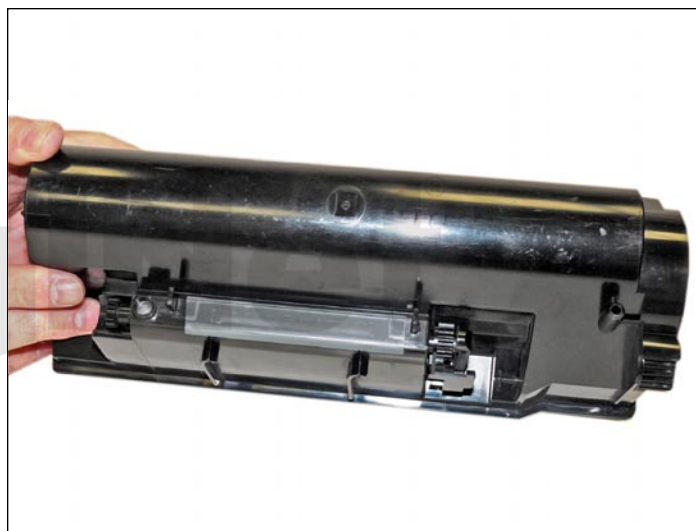
Clean out all the remaining toner.



2. Make sure the toner port is closed. If open, close the port by turning a tab on the gear with a screwdriver.



3. Fill the cartridge with toner for use in the TK-60 series of cartridges. Replace the fill plug.



4. If shipping the cartridge, place a small strip of tape across the toner port.



LEXMARK X850 TONER CARTRIDGE

The Lexmark X850 toner cartridges are rated for 30,000 pages. The part numbers for the cartridge is X850H21G.

There is a chip used on this cartridge that must be replaced each cycle.



1. On the colored end cap, locate the four small rectangular holes. In each of these holes is a locking tab. With a small jeweler's screwdriver, press up on the top two tabs to release the top half, and press down with the screwdriver to release the bottom half. Remove the end cap.



2. Remove the fill plug and clean out all remaining toner.



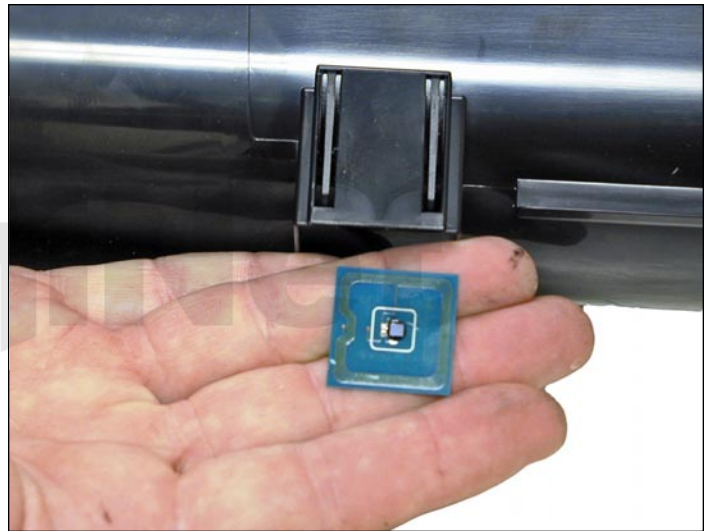
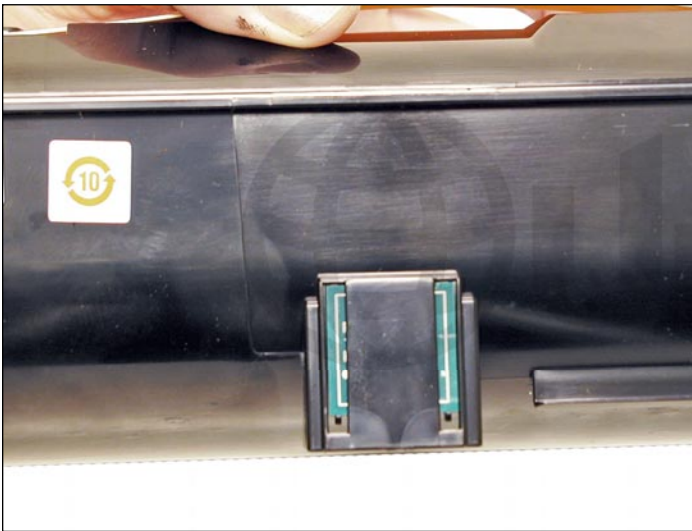
3. Fill with toner for use in the Lexmark X850.

Replace the fill plug.



4. Install the end cap.

Make sure it snaps fully in place.

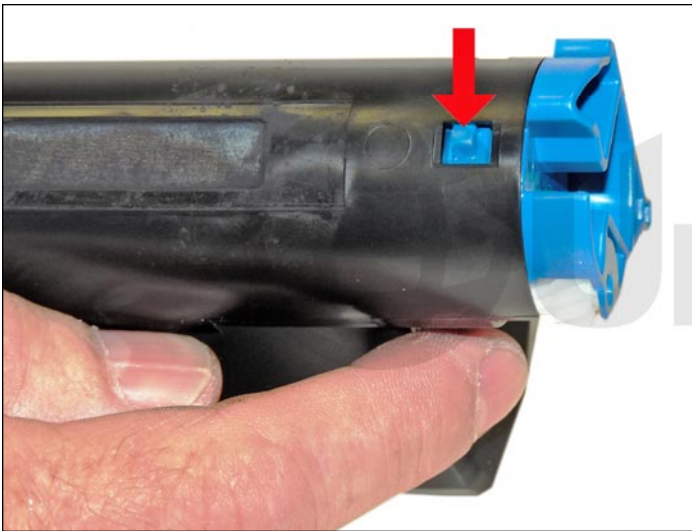


5. Replace the chip by pulling up on the chip cover, and lifting the chip up slightly so it can slide over the two tabs.

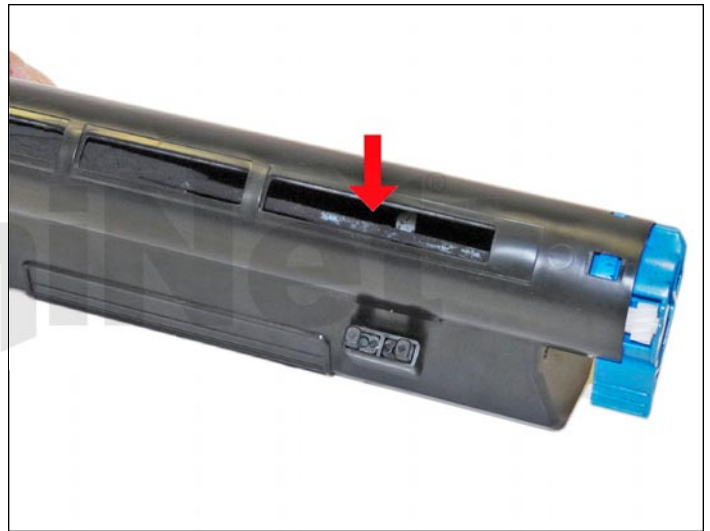


OKIDATA B420 TONER CARTRIDGE

There are three different yield Okidata B420 toner cartridges. The low yield is 43979101 rated for 3,500 pages, the high yield is 43979201 rated for 7,000 pages, and the extra high yield is 43979215 rated for 12,000 pages. There is a chip used on this cartridge that must be replaced each cycle.



1. Press in on the small blue tab.



2. Turn the handle to open the toner port.

Clean out all the remaining toner.



3. Fill with toner for use with the Okidata B420 series, through the toner port opening.



4. Close the toner port by turning the handle until it locks.

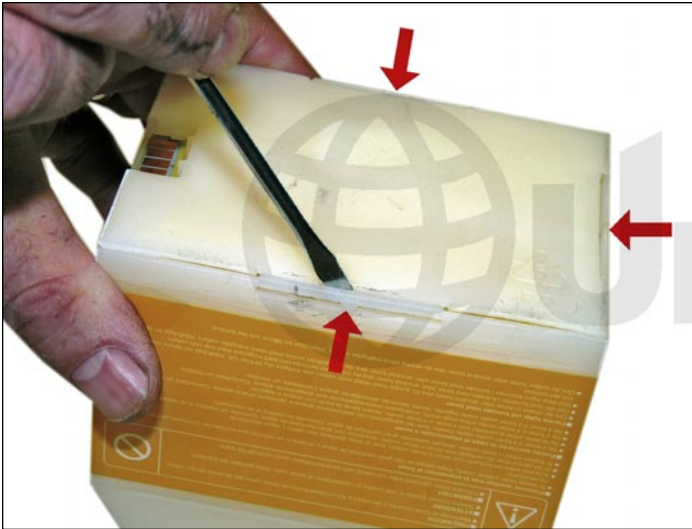


5. Replace the chip by prying up the locking tab on the bottom of the chip holder. Slide the new chip in. Make sure it locks in place.



RICOH AFICIO CL-7000 TONER CARTRIDGE

The Ricoh CL-7000 toner cartridges are rated for 20,000 pages black, and 10,000 pages color. The Black and color cartridges are physically a different size. The cartridge part numbers are 885372 Black, 885375 Cyan, 885374 Magenta, and 885373 Yellow. There is a chip used on this cartridge that must be replaced each cycle. The cartridges for this engine are a bit different, in that they are made up of an outer casing, which holds a plastic bag in it.



1. Open the tabs on the top cover (side that holds the chip, opposite of the feed valve) of the cartridge by releasing the interlocking clips. There are three clips, one on each side minus the chip side.



2. Once you release the clips, the cover can be lifted revealing the toner bag.

Notice the squared white breather on the bag.

You do not want to cut or tamper with this breather.



3. Cut a small incision on the plastic bag that will allow you to clean out the old toner and to fill it again. This slit will be sealed with tape when done.

4. Clean out any remaining toner and refill with toner for use in the Ricoh CL-7000.



5. Clean the outside of the bag as much as possible and seal the slit closed with a good packing tape.



6. Slide out the old chip and replace it.



7. Snap the top cover back in place.

Make sure the three clips are locked in place.



RICOH AFICIO C-4500 TONER CARTRIDGE

The Ricoh C-4500 toner cartridges are rated for 23,000 pages black and 17,000 pages color.

The cartridge part numbers are 888604 Black, 888605 Cyan, 888606 Magenta, and 888605 Yellow.

There is a chip used on this cartridge that must be replaced each cycle.



1. On the end cap, locate the two large tabs on both sides.



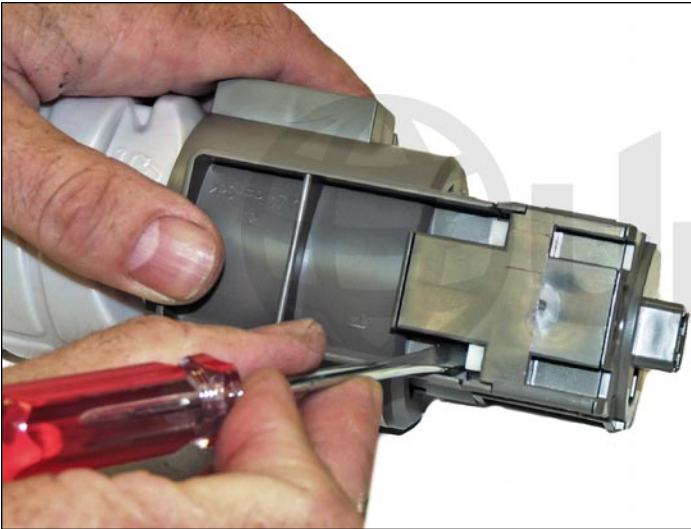
2. Press the white button in so it's slightly behind the plastic wall.



3. Gently pry up the tabs and pry the port cover off.



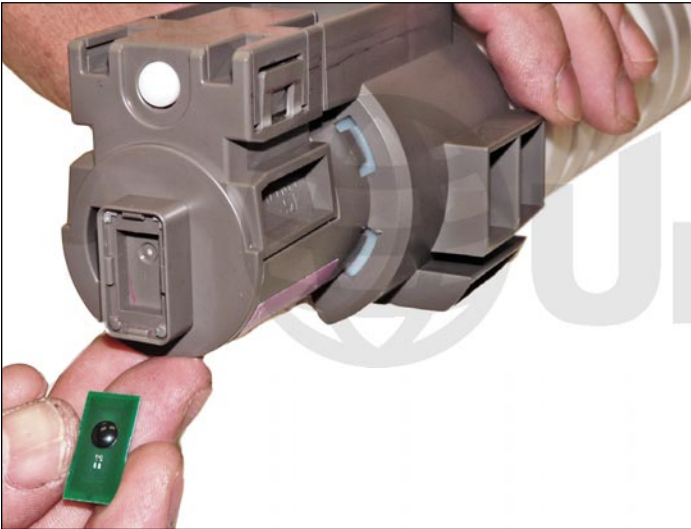
4. Clean out all the toner from the toner port and the tube. Fill the tube with toner for use in the Ricoh Aficio C4500 toner cartridges.



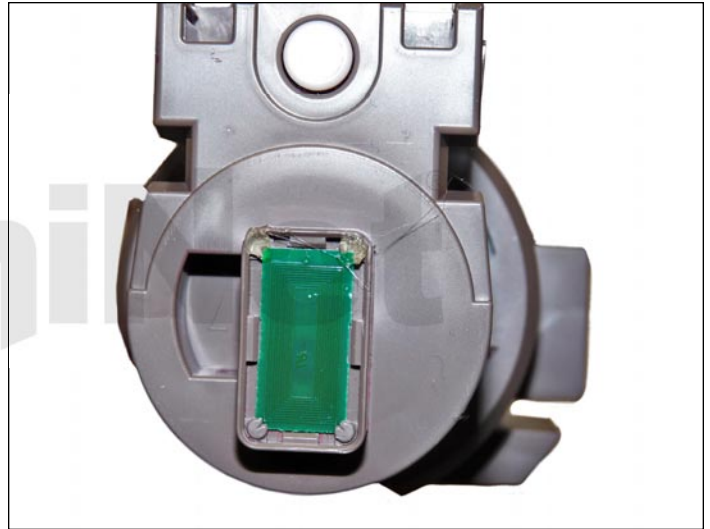
5. Replace the cleaned port cover. Press the white button assembly from the back so that it is fully extended.



6. To remove the chip, slice off the two corner tabs with a chisel or sharp knife.



7. Slide out the chip and replace.

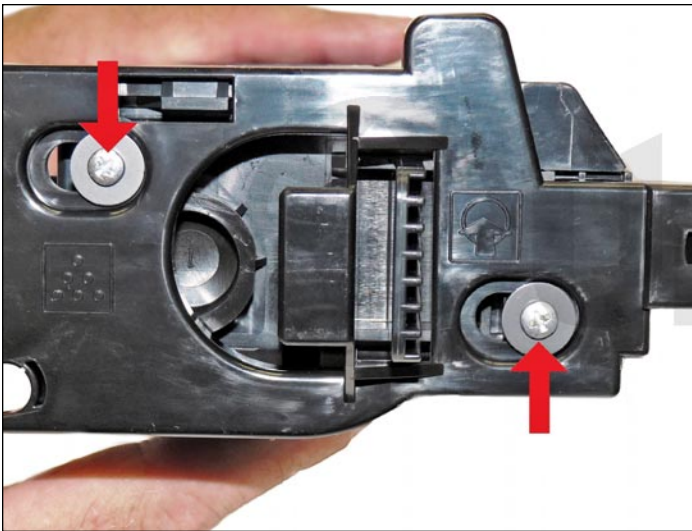


8. With a hot glue gun, place a small amount of glue on each of the corners that were removed.

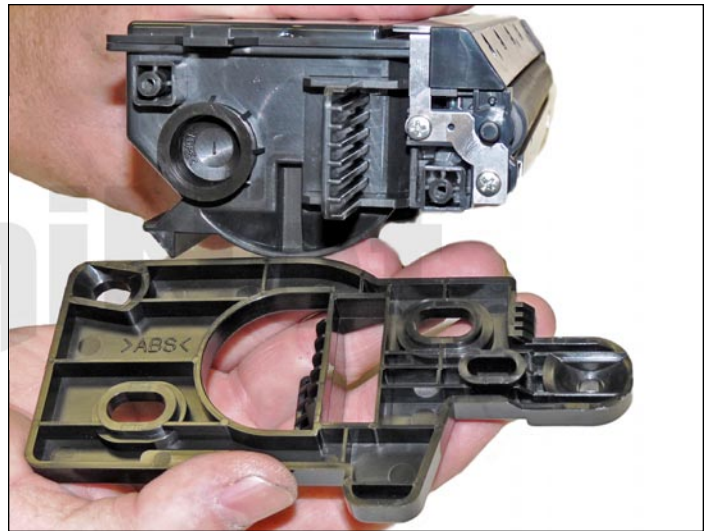


SHARP AM-300/400/900 TONER CARTRIDGE

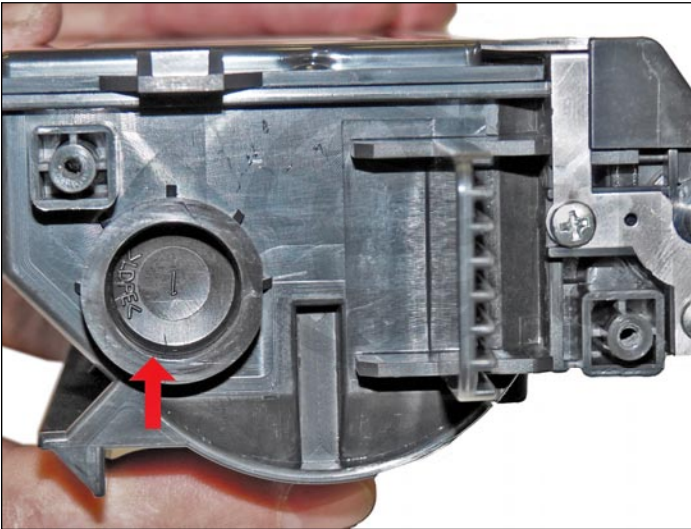
The Sharp AM-900 toner cartridges are rated for 3,000 pages. The part numbers for the cartridge is AM-90D or AM-30DC outside the US. There is a NOT a chip used on this cartridge. **NOTE:** The developer roller on this cartridge can be removed for a full cleaning but as the doctor blade is very easily damaged, its better left alone.



1. Remove the two screws from the end cap.



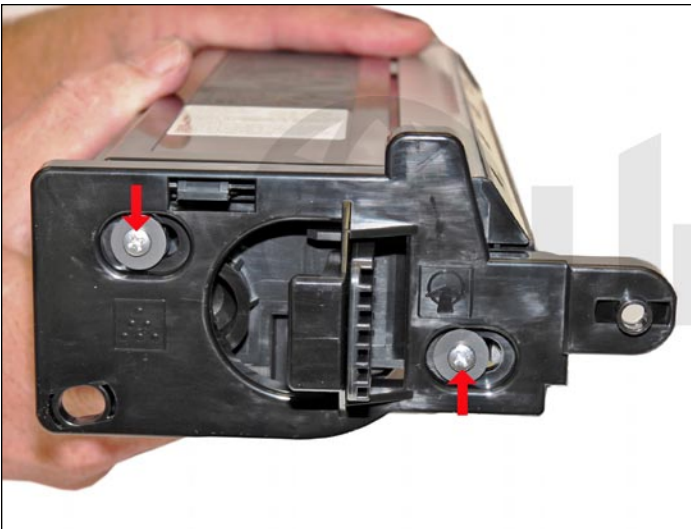
2. Remove the end cap.



3. Remove the fill plug and clean out all the remaining toner from the hopper.



4. Fill the hopper with toner for use in the Sharp AM-90D (AM-30DC) cartridge, and replace the fill plug.



5. Slide the end cap so it fits over the top tab.

Install the two screws.